

SIMPLE WESTERN CERTIFIED ANTIBODY DATASHEET

[View
Antibody Link](#)

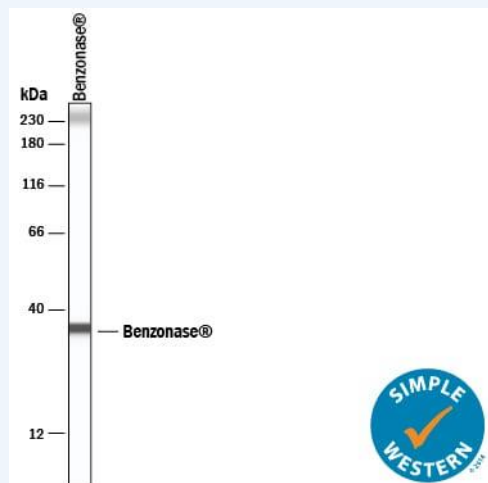


Figure1 Simple Western lane view shows lysates of recombinant Benzonase® Nuclease protein, loaded at 0.2 mg/mL. A specific band was detected for Benzonase® Nuclease/NucA at approximately 35 kDa (as indicated) using 10 µg/mL of Rabbit Anti-Benzonase® Nuclease/NucA Monoclonal Antibody (Catalog # MAB10063). This experiment was conducted under reducing conditions and using the 12-230 kDa separation system.

PROTEIN TARGET/ANTIBODY	
Protein Target	Benzonase Nuclease
Protein Isoform	Benzonase Nuclease Antibody (2404B) [Unconjugated]
Antibody Type	Primary
Host Species/Clonality	Rabbit Monoclonal
ASSAY	
Sample Type	Recombinant Benzonase® Nuclease/NucA Protein 0.2 mg/mL
Sample Concentration	0.2 mg/mL
Antibody Concentration/Dilution	10 µg/mL
Antibody Diluent	
Detection Mode	Chemiluminescence
Separation Type	Size
Matrix	12-230 kDa
Observed kDa	35 kDa
Publications	None listed

This antibody is validated for Gel-Free, Blot Free, Hands Free Simple Western Systems. To learn about Simple Western Systems, available Simple Western antibodies, or new antibody submissions visit the links below. For additional information, please contact support@proteinsimple.com.

[Simple Western Systems](#)

[Simple Western Antibody Database](#)

[Simple Western Antibody Submission](#)